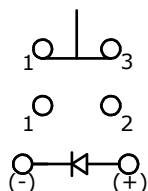
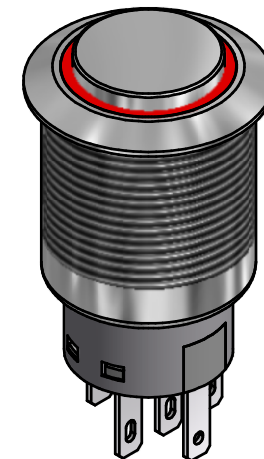
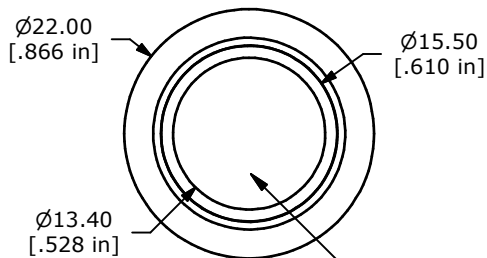
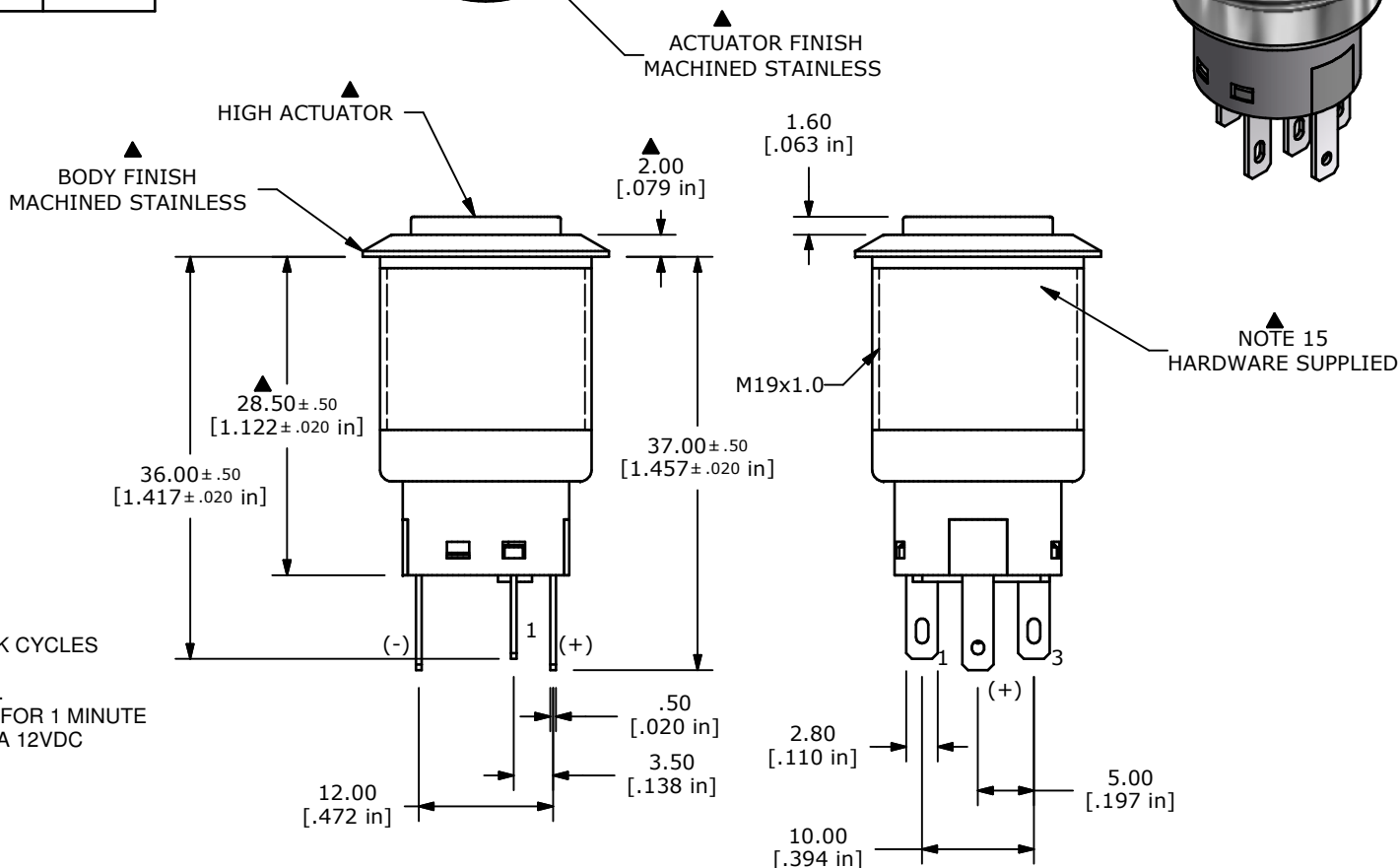


| SWITCH FUNCTION | |
|-----------------|--------|
| POS. 1 | POS. 2 |
| | |
| ON | ON |
| 1-3 | 1-2 |



▲ SPDT MAINTAINED CONTACT CONFIGURATION

- NOTE:
- ALL DIMENSIONS IN MM [INCH]
 - GENERAL TOLERANCE: X.X=±0.4
X.XX=±0.25
 - TERMINAL NUMBERS FOR REF ONLY
 - CONTACT MATERIAL: SILVER
 - RATING: 2A 24VDC
0.7A 125VAC (cURus)
 - ELECTRIC LIFE: 50,000 MAKE-AND-BREAK CYCLES AT FULL LOAD.
 - INSULATION RESISTANCE: 1,000 MΩ MIN.
 - DIELECTRIC STRENGTH: 2,000 VAC MIN. FOR 1 MINUTE
 - CONTACT RESISTANCE: 50mΩ MAX. @ 1A 12VDC
 - OPERATING TEMP.: -20°C to 55°C
 - TRAVEL: 2.8mm
 - ▲ DENOTES CRITICAL PARAMETER.
 - LAMP VOLTAGE: 1.8V
 - INGRESS PROTECTION: IP65
 - HARDWARE SUPPLIED: O-RING AND HEXNUT
 - ILLUMINATION COLOR: RED
 - 2002/95/EC (ROHS) COMPLIANT



| | | | | |
|---------------------|---------------|--------|---------------------|-------|
| TITLE PV4H230SS-311 | | | | |
| SCALE | DATE 3/3/2014 | DR EBP | DWG 52-PV4H230SS311 | REV A |

| | | | | |
|--|--------|------------------------|--------|-----|
| A | 21390 | RELEASE FOR PRODUCTION | 3/3/14 | EBP |
| REV | PCR NO | DESCRIPTION | DATE | BY |
| THE INFORMATION CONTAINED IN THIS DOCUMENT IS PROPRIETARY TO E-SWITCH AND IS NOT TO BE COPIED OR TRANSFERRED | | | | |